



Missouri State Volleyball Game Notes

Rick Kindhart, Director of Athletics Communications
Ben Adamson, Assistant Director, Volleyball Contact
Eric Doennig, Assistant Director
901 S. National Ave., Springfield, MO 65897
Phone (417) 836-5402
www.MissouriStateBears.com

ATHLETICS COMMUNICATIONS

2016 MISSOURI STATE SCHEDULE (3-3 Overall, 0-0 MVC)

August

Illini Classic

26 Fri.	vs. Xavier	L, 2-3
27 Sat.	vs. Arkansas	W, 3-0
27 Sat.	at #14 Illinois	W, 3-2

September

Hawaiian Airlines Wahine Volleyball Classic

1 Thu.	at #15 Hawai'i	L, 0-3
2 Fri.	vs. #8 UCLA	L, 1-3
3 Sat.	vs. Pacific	W, 3-0

Dr. Mary Jo Wynn Invitational

8 Thu.	McNeese State (ESPN3)	7 p.m.
9 Fri.	#12 Ohio State (ESPN3)	7 p.m.
10 Sat.	Western Illinois (ESPN3)	12 p.m.
10 Sat.	IUPUI (ESPN3)	7 p.m.
13 Wed.	at Arkansas State	6 p.m.

Marquette Invitational

16 Fri.	vs. Milwaukee	4 p.m.
17 Sat.	vs. Iowa State	11 a.m.
17 Sat.	at Marquette	7 p.m.
23 Fri.	Wichita State* (ESPN3)	7 p.m.
26 Mon.	Southern Illinois* (ESPN3)	7 p.m.
30 Fri.	at UNI* (ESPN3)	7 p.m.

October

1 Sat.	at Drake* (ESPN3)	7 p.m.
7 Fri.	Bradley* (ESPN3)	7 p.m.
8 Sat.	Loyola* (ESPN3)	7 p.m.
10 Mon.	Evansville* (ESPN3)	7 p.m.
14 Fri.	at Illinois State* (ESPN3)	7 p.m.
15 Sat.	at Indiana State* (ESPN3)	6 p.m.
21 Fri.	at Wichita State* (ESPN3)	7 p.m.
28 Fri.	Drake* (ESPN3)	7 p.m.
29 Sat.	UNI* (ESPN3)	7 p.m.

November

5 Sat.	at Bradley* (ESPN3)	7 p.m.
6 Sun.	at Loyola* (ESPN3)	7 p.m.
11 Fri.	Indiana State* (ESPN3)	7 p.m.
12 Sat.	Illinois State* (ESPN3)	7 p.m.
18 Fri.	at Evansville* (ESPN3)	7 p.m.
19 Sat.	at Southern Illinois* (ESPN3)	7 p.m.

MVC Tournament

24 Thu.	TBD (ESPN3)	5/7:30 p.m.
25 Fri.	TBD (ESPN3)	5/7:30 p.m.
26 Sat.	TBD (ESPN3)	4 p.m.

(*) MVC match; **Bold** home matches; all times are Springfield times; MVC Tournament will be in Cedar Falls, Iowa. ESPN3 indicates that match will be carried live on ESPN3. The Valley on ESPN3 is available for free at www.WatchESPN.com or on the WatchESPN App.

MissouriStateBears.com

Follow your Bears on
@MissouriStBears / @MissouriStateVB



BEARS HOST DR. MARY JO WYNN INVITATIONAL

Opponents:

McNeese State
Thursday, September 8, 7 p.m.
#12 Ohio State
Friday, September 9, 7 p.m.
Western Illinois
Saturday, September 10, 12 p.m.
IUPUI
Saturday, September 10, 7 p.m.

Location:

Springfield, Mo.
Site:
Hammons Student Center
Live Stats:
www.MissouriStateBears.com
Live Video:
ESPN3 / WatchESPN App



Missouri State BEARS

• Record	3-3
• MVC	0-0
• AVCA Rank	RV
• PrepVolleyball Rank	29
• Kills Leader	Lily Johnson (3.96/set)
• Digs Leader	Emily Butters (4.26/set)

The Missouri State volleyball team (3-3) makes its home debut this weekend with the annual Dr. Mary Jo Wynn Invitational, Sept. 8-10 at Hammons Student Center. The Bears will take on McNeese State at 7 p.m. Thursday, 12th-ranked Ohio State at 7 p.m. Friday, and Western Illinois and IUPUI on Saturday at 12 p.m. and 7 p.m., respectively. Green Bay will also play in the 11-match tournament, though the Bears and Phoenix will not meet.

MSU's next victory will likely make the Bears the third program in NCAA Division I history with 1,200 wins, joining UCLA and Nebraska on that list. Additionally, Ohio State will be the fourth top-15 opponent Missouri State has played this season.

THE OPPONENTS

McNeese State is 2-6 on the season with victories against Grambling State and Louisiana. Under the direction of former Drury head coach Ashleigh Fitzgerald, the Cowgirls are picked to finish sixth and seventh in the two preseason Southland Conference polls. As a team, McNeese hits .167 compared to .248 for opponents, and averages 11.03 kills, 0.97 aces, 13.74 digs and 0.97 blocks per set.

Ohio State (5-1) is ranked 12th this week in the AVCA Coaches Poll, with its only loss coming to No. 10 BYU. Three Buckeyes average at least 2.64 kills per set, and the team hits .263 against .184 for the opposition. OSU averages 13.91 kills, 1.59 aces, 13.05 digs and 2.00 blocks per set.

Western Illinois is led by head coach and former Bear Kelly (Hartley) Richardson, a Springfield native who played for Coach Stokes during the 2000 season at MSU. The Leathernecks are 0-7 this season, and hit .060 as a team while letting opponents attack at a .220 efficiency. WIU averages 9.15 kills, 0.67 aces, 14.15 digs and 1.74 blocks per set.

IUPUI is 2-5 on the season with wins against Ball State and Central Michigan. The Jaguars are expected to finish third in the Summit League this season, with junior Kori Waelbroeck being a preseason all-conference pick. The Jags hit .184 as a team compared to .259 for opponents and average 12.00 kills, 1.25 aces, 14.12 digs and 1.96 blocks per set.

THE SERIES

Missouri State has never met McNeese State in volleyball.

The Bears are 3-2 against Ohio State, though the teams have not played since 1991.

MSU is 17-3 versus Western Illinois, with the last meeting in 2004. The Bears and Leathernecks were both Gateway Conference members from 1983-91.

Missouri State and IUPUI have played once, an MSU sweep in Indianapolis in 2001.

TOURNAMENT SCHEDULE

Thursday, Sept. 8

Missouri State vs. McNeese State, 7 p.m.

Friday, Sept. 9

Green Bay vs. Western Illinois, 10 a.m.
IUPUI vs. #12 Ohio State, 12 p.m.
Western Illinois vs. McNeese State, 3 p.m.
Green Bay vs. IUPUI, 5 p.m.
Missouri State vs. #12 Ohio State, 7 p.m.

Saturday, Sept. 10

Green Bay vs. McNeese State, 10 a.m.
Missouri State vs. Western Illinois, 12 p.m.
IUPUI vs. McNeese State, 2 p.m.
Green Bay vs. #12 Ohio State, 5 p.m.
Missouri State vs. IUPUI, 7 p.m.

2016 MVC STANDINGS

Team	MVC	Pct.	Overall	Pct.
Southern Illinois	0-0	.000	6-1	.857
Drake	0-0	.000	6-2	.750
Indiana State	0-0	.000	4-2	.667
Wichita State	0-0	.000	3-2	.600
Missouri State	0-0	.000	3-3	.500
Loyola	0-0	.000	3-3	.500
UNI	0-0	.000	3-3	.500
Bradley	0-0	.000	3-4	.429
Illinois State	0-0	.000	3-4	.429
Evansville	0-0	.000	1-5	.167

Thru Sept. 5

THIS WEEK'S MVC SCHEDULE

Monday, September 5

Evansville 3, SEMO 2

Tuesday, September 6

Southern Illinois 3, Murray State 0

Thursday, September 8

McNeese State at Missouri State, 7

Wichita State at Colorado State, 8

Friday, September 9

#12 Ohio State at Missouri State, 7

UNI vs. Omaha, 3 (Kansas City, Mo.)

UNI at UMKC, 7:30

Southern Illinois at #23 Western Kentucky, 1

Indiana State vs. UNC Wilmington, 10:30 a.m. (Denton, Texas)

Indiana State at North Texas, 7:30

Loyola vs. Miami (Fla.), 10 a.m. (Manhattan, Kan.)

Loyola vs. Mississippi State, 5 (Manhattan, Kan.)

Illinois State vs. Seton Hall, 1 (Murfreesboro, Tenn.)

Illinois State at Middle Tennessee, 6:30

Drake at Eastern Illinois, 7

Bradley vs. Omaha, 10 a.m. (Kansas City, Mo.)

Bradley vs. Cornell, 5:30 (Kansas City, Mo.)

Austin Peay at Evansville, 7

Saturday, September 10

Western Illinois at Missouri State, 12

IUPUI at Missouri State, 7

UNI at #4 Kansas, 6

Southern Illinois vs. Michigan St., 11 a.m. (Bowling Green, Ky.)

Southern Illinois vs. Cincinnati (Bowling Green, Ky.)

Indiana State vs. Louisiana, 9 a.m. (Denton, Texas)

Loyola at Kansas State, 1

Illinois State vs. Tennessee Tech, 1:30 (Murfreesboro, Tenn.)

Drake vs. Louisiana Tech, 10:30 a.m. (Charleston, Ill.)

Drake vs. Bowling Green, 4 (Charleston, Ill.)

Bradley at UMKC, 1:30

Dayton at Evansville, 12:30

Kent State at Evansville, 6:30

Wichita State vs. #3 Texas, 1

Sunday, September 11

Wichita State vs. Samford, 1 (Fort Collins, Colo.)



2016 MVC PRESEASON POLL

Team	Total
1. Wichita State (7)	97
2. Missouri State (1)	85
3. Southern Illinois (1)	82
4. UNI (1)	72
5. Illinois State	57
6. Loyola	50
7. Indiana State	41
8. Drake	33
9. Bradley	28
10. Evansville	15

LAST WEEK

Missouri State went 1-2 at the Hawaiian Airlines Wahine Volleyball Classic. Thursday, 15th-ranked Hawai'i hit .312 in a sweep of the Bears. Friday, Lily Johnson had 18 kills and Emily Butters scooped 25 digs in a 3-1 loss to No. 8 UCLA. Saturday, Aubrey Cheffey hit .600 with 11 kills and five blocks as the Bears swept Pacific.

COACH MELISSA STOKES

Head Coach Melissa Stokes is 441-216 (.671) in her 21st season at Missouri State. She became the MVC's all-time winningest coach in league matches Sept. 30, 2011, when the Bears beat Bradley 3-1 for her 197th conference victory, and won her 400th career match against Miami (Fla.) on Sept. 13, 2014. A native of El Cajon, Calif., Stokes has guided Missouri State to an overall record of 370-160 (.698) and 216-72 (.750) mark in the Missouri Valley Conference since 2000. In 2003, the Bears were the MVC regular-season champions and advanced to the NCAA Tournament for the first time since 1993. MSU made a return trip to the NCAAs in 2005 after winning the MVC Tournament, and advanced to the second round for the first time in program history in 2006. MSU defeated Arkansas before falling to No. 13 Oklahoma in the second round, and has since added postseason bids in 2007, 2008, 2010, 2011 and 2015.

Stokes came to Missouri State from the University of Idaho, where she helped the Vandals to four straight NCAA Tournament berths. As a setter at San Diego State, Stokes played four seasons and helped the Aztecs to two NCAA appearances. Stokes ranked 40th among active Division I coaches total victories and 43rd in win percentage entering 2015. Only four coaches ahead of Stokes on the wins list have coached fewer seasons.

QUICK SETS

- Missouri State has spent two weeks this season in both the AVCA Coaches Poll and PrepVolleyball poll. The Bears received eight votes for the No. 38 spot in the AVCA this week, are are rated 29th in the most recent PrepVolleyball edition.
- Head coach Melissa Stokes is climbing up the all-time MVC coaching lists in a number of categories. Listed below is the 21st-year coach's ranking in those categories. Lists are compiled based on statistics at Valley schools only:
 - Third in total victories with 441
 - First in MVC victories with 255
 - Seventh in win percentage overall (.671) and third among active MVC coaches
 - Seventh in win percentage in MVC matches only (.708)
- Missouri State has won at least 20 matches in 16 of the last 17 seasons while posting winning records both overall and in Missouri Valley Conference play for 17 consecutive years.

2016 AWARDS & HONORS

Aubrey Cheffey

- MVC Freshman of the Week (9/6)

Lily Johnson

- Preseason all-MVC
- Illini Classic all-tournament
- MVC Player of the Week (8/29)
- MVC Scholar-Athlete of the Week (8/30)
- Wahine Volleyball Classic all-tournament

Lynsey Wright

- Illini Classic all-tournament

2016 MISSOURI STATE ROSTER

No.	Numerical	Pos.	Ht.	Yr.	Hometown-High School
1	Brianne Dixon	DS	5-7	Jr.	Springfield, Mo. (Kickapoo High)
2	Julia Hanson	OH/DS	6-0	Fr.	Fort Atkinson, Wis. (Fort Atkinson High)
5	Lynsey Wright	MB	6-0	Jr.	Glen Carbon, Ill. (Edwardsville High)
6	Lauren Boone	S	6-1	Jr.	Branson, Mo. (Branson High)
7	Laynie Dake	MB	6-2	Fr.	Mount Vernon, Mo. (Mount Vernon High)
8	Emily Butters	L	5-8	So.	Richmond, Texas (Travis High)
9	Simone House	MB	6-3	Sr.	Oshkosh, Wis. (North High)
10	Aubrey Cheffey	OH	6-2	Fr.	Nixa, Mo. (Nixa High)
11	Ashley Ophoven	OH	6-1	So.	Ozark, Mo. (Ozark High)
12	Caroline Finnell	RS	6-1	So.	Chesterfield, Mo. (Marquette High)
13	Gerri Idos	DS	5-1	Fr.	Springfield, Mo. (Kickapoo High)
14	MacKenzie Irwin	MB	6-1	So.	Joplin, Mo. (Carl Junction High)
15	Tatum Marshall	DS/L	5-7	Sr.	Fayetteville, Ark. (Fayetteville High)
17	Lily Johnson	OH	5-11	Jr.	Wildwood, Mo. (Lafayette High)
19	Mikaela Mosquera	MB	6-1	So.	West Chicago, Ill. (St. Charles East High)
21	Paige Perry	OH/DS	5-9	Fr.	Ozark, Mo. (Ozark High)
22	Daniele Messa	S	5-7	Fr.	Bartlett, Ill. (St. Francis High)
23	Cambree Villarreal	OH	6-2	So.	Amarillo, Texas (Amarillo High)

Head Coach: Melissa Stokes (San Diego State, 1991), 21st year

Assistant Coach: Jake Barreau (Wisconsin, 2013), 3rd year

Assistant Coach: Kevin Dunn (Lindenwood, 2008), 2nd year

Graduate Assistant: Karen Rivatto (Missouri State, 2014), 2nd year

Pronunciations: Barreau (Buh-ROO), Cheffey (SHEFF-ee), Finnell (Fih-NELL), Idos (EE-dose), Ophoven (OP-hoe-vin), Mikaela (Mih-KAY-luh), Mosquera (Moss-CARE-uh), Cambree (Camm-bree), Villarreal (VILL-uh-ray-all)

2016 DOUBLE-DOUBLES

Player.....	K-D	K-A	K-B	A-D	Total
Lily Johnson.....	6	0	0	0	6
Daniele Messa.....	0	0	0	1	1
Total	6	0	0	1	7

CAREER DOUBLE-DOUBLES

Player.....	K-D	K-A	K-B	A-D	Total
Lauren Boone.....	0	0	0	1	1
Lily Johnson.....	40	0	0	0	40
Daniele Messa.....	0	0	0	1	1
Total	40	0	0	1	42

2016 DOUBLE-FIGURE MATCHES

Player.....	K	D	A	B
Lauren Boone.....	0	0	4	0
Emily Butters.....	0	6	0	0
Aubrey Cheffey.....	1	0	0	0
Brianne Dixon.....	0	1	0	0
Lily Johnson.....	6	6	0	0
Tatum Marshall.....	0	1	0	0
Daniele Messa.....	0	0	3	0
Ashley Ophoven.....	2	0	0	0
Lynsey Wright.....	4	0	0	0
Total	13	14	7	0

CAREER DOUBLE-FIGURE MATCHES

Player.....	K	D	A	B
Lauren Boone.....	2	1	4	0
Emily Butters.....	0	36	0	0
Aubrey Cheffey.....	1	0	0	0
Brianne Dixon.....	0	4	0	0
Simone House.....	10	0	0	0
Lily Johnson.....	67	43	0	0
Tatum Marshall.....	0	31	0	0
Daniele Messa.....	0	0	3	0
Ashley Ophoven.....	10	0	0	0
Lynsey Wright.....	34	0	0	0
Total	125	116	7	0

ALL-TIME WINNINGEST DIVISION I WOMEN'S VOLLEYBALL PROGRAMS

Rank	School	Wins
1.	Nebraska	1,249
	UCLA	1,249
3.	Missouri State	1,199
4.	Brigham Young	1,197
5.	Penn State	1,191
6.	Long Beach State	1,186
7.	Hawai'i	1,182
8.	Texas	1,165
9.	Minnesota	1,125
10.	Portland State	1,098

Through Sept. 5, 2016 - Min. 10 years in DI



- Missouri State ranks third all-time among Division I schools with 1,199 victories.
- Missouri State is 43-33 in five-set matches since the beginning of the 2006 season and has rallied from 0-2 deficits to win seven times since then as well.
- MSU is 183-33 since the beginning of 2006 when winning set two.
- Despite only two seniors on the roster, the Bears return the vast majority of their statistical output from last season. In total, MSU brings back 90.6 percent of its kills, 88.7 percent of its points, 79.3 percent of service aces and 69.5 percent of total digs.

MVC WEEKLY AWARD WINNERS

The Bears have picked up three MVC weekly awards so far this season. Lily Johnson was honored as the league's Player of the Week and Scholar-Athlete of the Week after the season's opening weekend. She averaged 3.92 kills, 3.00 digs, 0.31 aces and 0.31 blocks as the Bears defeated Arkansas and No. 14 Illinois.

Aubrey Cheffey was the Freshman of the Week on Sept. 6 after hitting .410 in three matches in Hawai'i, averaging 2.11 kills and 1.00 blocks per set with a .487 kill percentage against 15th-ranked Hawai'i, No. 8 UCLA and Pacific.

SIX IS THE MAGIC NUMBER

The number six has been a milestone number the last 17-plus seasons in terms of winning streaks, as the Bears have strung together at least six consecutive wins a total of 20 times since the beginning of the 1999 season. MSU had a six-match winning streak from Oct. 10-25 this season.

HOMECOMING

Missouri State has been dominant at home since 2000, compiling a record of 176-43 for an .804 winning percentage at Hammons Student Center.

The Bears went 11-5 in 2015 and have won at least 64 percent of their home matches in 16 consecutive seasons.

LOCAL FLAVOR

Missouri State boasts two players from Springfield on its 2016 roster (Brianne Dixon and Gerri Idos from Kickapoo High) and a total of eight players from southwest Missouri, including Lauren Boone (Branson), MacKenzie Irwin (Joplin), Laynie Dake (Mount Vernon), Ashley Ophoven and Paige Perry (Ozark), and Aubrey Cheffey (Nixa). In all, 10 of MSU's 18 players hail from the Show-Me State.

TOUGH SCHEDULE

The Bears once again beefed up their schedule, with 13 matches against 10 teams that played in the NCAA Tournament last season, including seven on the non-conference schedule. Four of MSU's 2016 opponents were ranked in the preseason AVCA top 25, and four more received at least six top-25 votes.

In total, MSU's 2016 opponents went 421-313 (.574) a season ago, with 14 of the 23 teams boasting an RPI of 100 or better. The Bears will play 18 total matches against those top-100 teams and 23 matches against schools with a winning record last season.

2016 MISSOURI STATE SINGLE MATCH HIGHS

Missouri State Individual	Team
Kills	20, Lily Johnson vs. Xavier, 8/26
Attacks	68, Lily Johnson vs. Xavier, 8/26
Hitting Pct.	.276, Ashley Ophoven at #14 Illinois, 8/27
Points	21, Lily Johnson vs. #8 UCLA, 9/2
Assists	40, Lauren Boone vs. Xavier, 8/26
Aces	3, Tatum Marshall vs. Xavier, 8/26
	3, Lily Johnson at #14 Illinois, 8/27
Digs	25, Emily Butters vs. #8 UCLA, 9/2
Block Solos	1, by four players on five occasions
Block Asst.	5, by two players on three occasions
Total Blocks	6, Lynsey Wright vs. #8 UCLA, 9/2
Opponent Individual	Team
Kills	21, Nikki Taylor, #15 Hawai'i, 9/1
Attacks	63, Abbey Bessler, Xavier, 8/26
Hitting Pct.	.583, Naya Crittenden, #14 Illinois, 8/27
Points	25, Nikki Taylor, #15 Hawai'i, 9/1
Assists	50, Jordyn Poulter, #14 Illinois, 8/27
Aces	2, by four players on four occasions
Digs	22, Meredith Klare, Xavier, 8/26
Block Solos	1, by 10 players on 10 occasions
Block Asst.	8, Katie Stadick, #14 Illinois, 8/27
Total Blocks	8, Katie Stadick, #14 Illinois, 8/27
	59 at #14 Illinois, 8/27
	167 vs. Xavier, 8/26
	.283 vs. Pacific, 9/3
	56 at #14 Illinois, 8/27
	5 vs. Xavier, 8/26
	5 at #14 Illinois, 8/27
	71 vs. Xavier, 8/26
	1 vs. Arkansas, 8/27
	14 vs. #8 UCLA, 9/2
	14 vs. Pacific, 9/3
	9 vs. #8 UCLA, 9/2
	68, Xavier, 8/26
	179, Xavier, 8/26
	.312, #15 Hawai'i, 9/1
	61, Xavier, 8/26
	6, Pacific, 9/3
	80, Xavier, 8/26
	2, by four teams
	28, #14 Illinois, 8/27
	16, #14 Illinois, 8/27

MSU INDIVIDUAL MVC RANKINGS THRU 9/5 (OVERALL)

Category	Player	Rank	Stat
Kills/Set	Lily Johnson	1	3.96
Assists/Set	Lauren Boone	5	6.80
Digs/Set	Emily Butters	3	4.26
Points/Set	Lily Johnson	1	4.37

MSU TEAM MVC RANKINGS THRU 9/5 (OVERALL)

Category	Rank (of 10)	Stat
Hitting %	7	.187
Opponent hitting %	8	.238
Assists/set	6	11.22
Kills/set	6	12.09
Blocks/set	9	1.52
Aces/set	9	0.96
Digs/set	5	14.78

MSU INDIVIDUAL NCAA RANKINGS THRU 9/5

Category	Player	Rank	Stat
Attacks/Set	Lily Johnson	10	12.87
Digs/Set	Emily Butters	125	4.25
Kills/Set	Lily Johnson	66	3.96
Points/Set	Lily Johnson	78	4.39
Total Attacks	Lily Johnson	17	296
Total Digs	Emily Butters	118	98
Total Kills	Lily Johnson	67	91
Total Points	Lily Johnson	81	101.0

MSU TEAM NCAA RANKINGS THRU 9/5

Category	Rank (of 318)	Stat
Aces/set	268	0.96
Assists/set	196	11.22
Blocks/set	276	1.52
Digs/set	131	14.78
Hitting %	198	.187
Kills/set	197	12.09
Winning %	146	.500
Opponent Hitting %	261	.238
Total Assists	169	258
Total Digs	135	340
Total Kills	169	278
Total Aces	245	22
Total Attacks	146	796
Total Blocks	251	35.0

NCAA ACTIVE LEADERS THRU 9/5

Category	Player	Rank	Stat
Kills	Lily Johnson	20	1,206
	Lynsey Wright	220	651
Kills/Set	Lily Johnson	3	4.28
Attacks/Set	Lily Johnson	2	12.28

MISSOURI STATE SEASON LEADERS

SEASON KILLS PER SET

1.	Michelle Witzke (1997)	5.70
2.	Michelle Witzke (1996)	5.19
3.	Joleen Meservy (1997)	4.88
4.	Lily Johnson (2015)	4.59
5.	Amanda Omar (1998)	4.36
6.	Kathy Crotty (1985)	4.22
7.	Katie Werges (2005)	4.12
8.	Lily Johnson (2014)	3.992
9.	Joleen Meservy (1998)	3.991
10.	Erin Murphy (2002)	3.91

SEASON KILLS

1.	Michelle Witzke (1997)	667
2.	Lily Johnson (2015)	620
3.	Michelle Witzke (1996)	581
4.	Amanda Omar (1998)	515
5.	Maureen Manda (1982)	510
6.	Joleen Meservy (1997)	503
7.	Lily Johnson (2014)	495
8.	Amanda Omar (1999)	485
9.	Joleen Meservy (1999)	470
10.	Katie Werges (2005)	466

SEASON DIGS

1.	Cara Hackmann (2009)	671
2.	Adeana McAfee (2006)	653
3.	Terri Del Conte (2008)	605
4.	Jane Parker (2004)	596
5.	Emily Butters (2015)	568
6.	Ashley Mason (2013)	559
7.	Maddy Hogan (2014)	547
8.	Adeana McAfee (2005)	544
9.	Ashley Mason (2012)	542
10.	Ashley Mason (2011)	523

PRESEASON ALL-CONFERENCE

Junior outside hitter Lily Johnson was voted the preseason all-conference team in 2016. Johnson is the reigning MVC Player of the Year and the only two-time All-American in MSU history.

FOLLOW THE BEARS

Follow the Bears all season long on Missouri State's official athletics website, MissouriStateBears.com, and get a behind-the-scenes look at the program on the team's Facebook (missouristatevb), Twitter (@MissouriStateVB) and Instagram (missouristatevolleyball) pages.

THE VALLEY ON ESPN3

The Valley on ESPN3, part of the Missouri Valley Conference's media rights agreement with ESPN, will feature all home volleyball matches from all 10 MVC institutions on the ESPN3 streaming platform. The HD-quality telecasts are available for free at www.WatchESPN.com or on the WatchESPN App.

MISSOURI STATE CAREER LEADERS

CAREER 20-KILL MATCHES*

1.	Michelle Witzke (94-97)	38
2.	Lily Johnson (14-pr.)	25
3.	Joleen Meservy (96-99)	22
4.	Amanda Omar (98-99)	16
5.	Erin O'Connor (03-06)	7
	Vanessa Wouters (94-95)	7
7.	Katie Werges (02-05)	6
8.	Olivia Brand (11-14)	5
	Erin Murphy (00-03)	5
	Rese McNatt (99-01)	5
11.	Three tied at	4

CONSECUTIVE MATCHES WITH 10+ KILLS

1.	Lily Johnson (10/14-10/15)	36
	Michelle Witzke (11/95-11/96)	23
3.	Michelle Witzke (9/97-11/97)	20
4.	Lily Johnson (11/15-pr.)	14
	Amanda Omar (10/98-9/99)	17
6.	Joleen Meservy (10/99-11/99)	15
	Michelle Witzke (11/96-9/97)	15
8.	Michelle Witzke (9/95-10/95)	10
	Jamie Adams (9/07-10/07)	10
10.	Lily Johnson (9/14) and 4 others	9

CAREER KILLS

1.	Michelle Witzke (94-97)	1919
2.	Kathy Crotty (83-86)	1570
3.	Joleen Meservy (96-99)	1513
4.	Jennifer Seveland Box (79-82)	1444
5.	Erin Murphy (00-03)	1432
6.	Maureen Manda (81-84)	1400
7.	Mary Beck (81-84)	1280
8.	Erin O'Connor (03-06)	1244
9.	Katie Werges (02-05)	1240
10.	Mindy Struckhoff (85-88)	1239
11.	Calli Norman (08-11)	1224
12.	Lily Johnson (14-pr.)	1206
13.	Olivia Brand (11-14)	1158
14.	Linette White (00-03)	1137
15.	Susan Ruch (86-89)	1130

CAREER KILLS PER SET

1.	Michelle Witzke (94-97)	4.55
2.	Lily Johnson (14-pr.)	4.28
3.	Amanda Omar (98-99)	4.12
4.	Joleen Meservy (96-99)	3.94
5.	Kathy Crotty (83-86)	3.33
6.	Erin Murphy (00-03)	3.31
7.	Katie Werges (02-05)	3.16
8.	Erin O'Connor (03-06)	3.11
9.	Linette White (00-03)	3.08
10.	Maureen Manda (81-84)	2.94

CAREER ATTACKS

1.	Michelle Witzke (94-97)	4944
2.	Erin Murphy (00-03)	3919
3.	Kathy Crotty (83-86)	3720
4.	Joleen Meservy (96-99)	3697
5.	Erin O'Connor (03-06)	3664
6.	Lily Johnson (14-pr.)	3464
7.	Katie Werges (02-05)	3335
8.	Jennifer Seveland Box (79-82)	3288
9.	Maureen Manda (81-84)	3157
10.	Christine McCartney (10-13)	3151

CAREER HITTING PERCENTAGE

1.	Linette White (00-03)	352
2.	Sabrina Apker (02-05)	338
3.	Jennifer Seveland Box	306
4.	Kelley Michnowicz (08-11)	2994
5.	Casey Young (99-02)	2990
6.	Calli Norman (08-11)	2987
7.	Simone House (13-pr.)	297
8.	Maureen Manda (81-84)	29268
9.	Chenille Bayless (00-03)	29266
10.	Kaitlin Jaeger (11-13)	289

*Match-by-match records date through 1987

2016 Missouri State Season Results (3-3, 0-0 MVC)

Date	Site	Att.	Opponent	W/L	Scores	Record	Kill Leader	Dig Leader
8/26	Neutral	2805	Xavier&	L	25-18, 25-23, 23-25, 17-25, 14-16	0-1	Johnson - 20	Butters - 17
8/27	Neutral	--	Arkansas&	W	25-16, 25-19, 29-27	1-1	Johnson - 14	Johnson - 16
8/27	Away	2544	#14 Illinois&	W	25-22, 14-25, 25-22, 15-25, 15-10	2-1	Johnson/Ophoven - 17	Butters - 12
9/1	Away	5604	#15 Hawai'i@	L	16-25, 22-25, 22-25	2-2	Johnson - 12	Butters - 12
9/2	Neutral	--	#8 UCLA@	L	25-21, 16-25, 18-25, 15-25	2-3	Johnson - 18	Butters - 25
9/3	Neutral	--	Pacific@	W	25-14, 25-23, 25-19	3-3	Cheffey - 11	Butters - 17
9/8	Home		McNeese State^					
9/9	Home		#12 Ohio State^					
9/10	Home		Western Illinois^					
9/10	Home		IUPUI^					
9/13	Away		Arkansas State					
9/16	Neutral		Milwaukee#					
9/17	Neutral		Iowa State#					
9/17	Away		Marquette#					
9/23	Home		Wichita State*					
9/26	Home		Southern Illinois*					
9/30	Away		UNI*					
10/1	Away		Drake*					
10/7	Home		Bradley*					
10/8	Home		Loyola*					
10/10	Home		Evansville*					
10/14	Away		Illinois State*					
10/15	Away		Indiana State*					
10/21	Away		Wichita State*					
10/28	Home		Drake*					
10/29	Home		UNI*					
11/5	Away		Bradley*					
11/6	Away		Loyola*					
11/11	Home		Indiana State*					
11/12	Home		Illinois State*					
11/18	Away		Evansville*					
11/19	Away		Southern Illinois*					

* Missouri Valley Conference matches; # - indicates AVCA ranking at time the match was played; & - Illini Classic in Champaign, Ill.; @ - Hawaiian Airlines Wahine Volleyball Classic; ^ Dr. Mary Jo Wynn Invitational in Springfield, Mo.; #Marquette Invitational in Milwaukee, Wis.; % - MVC Tournament in Cedar Falls, Iowa

2016 Missouri State Miscellaneous Statistics

Double-Figure Kill Matches (13): Johnson 6, Ophoven 3, Wright 3, Cheffey 1; **Opponents-** 14

20-Kill Matches (1): Johnson 1; **Opponents-** 1

25-Kill Matches (0): **Opponents-** 0

30-Kill Matches (0): **Opponents-** 0

Double-Figure Dig Matches (14): Butters 6, Johnson 6, Dixon 1, Marshall 1; **Opponents-** 16

20-Dig Matches (0): Butters 1; **Opponents-** 1

25-Dig Matches (0): Butters 1; **Opponents-** 0

30-Dig Matches (0): **Opponents-** 0

35-Dig Matches (0): **Opponents-** 0

40-Dig Matches (0): **Opponents-** 0

Double-Figure Block Matches (0): **Opponents-** 0

Double-Figure Kill-Dig Matches (6): Johnson 6; **Opponents-** 4

20-Kill, 20-Dig Matches (0): **Opponents-** 0

Double-Figure Kill-Block Matches (0): **Opponents-** 0

Double-Figure Kill-Block-Dig Matches (0): **Opponents-** 0

Double-Figure Kill-Dig-Assist Matches (0): **Opponents-** 0

Matches Leading MSU in Kills: Johnson 5, Ophoven 1, Cheffey 1

Matches Leading MSU in Digs: Butters 5, Johnson 1

Matches Leading MSU in Blocks: House 4, Wright 2, Cheffey 1, Dake 1

Matches Leading MSU in Aces: Johnson 3, Butters 3, Wright 3, Dixon 2, Marshall 1, Messa 1

2016 Individual Match-by-Match Statistics

Date	Opponent	Boone K-A-D-B	Butters K-A-D-B	Cheffey K-A-D-B	Dake K-A-D-B	Dixon K-A-D-B	House K-A-D-B	Idos K-A-D-B	Irwin K-A-D-B	Johnson K-A-D-B	Marshall K-A-D-B	Messa K-A-D-B	Mosquera K-A-D-B	Ophoven K-A-D-B	Villarreal K-A-D-B	Wright K-A-D-B
8/26	Xavier	3-40-9-1	0-1-17-0	DNP	DNP	0-0-12-0	4-0-0-4	DNP	5-1-2-2	20-4-13-0	0-0-10-1	0-6-1-0	DNP	4-0-0-1	6-0-2-1	14-0-5-0
8/27	Arkansas	2-32-6-0	0-1-15-0	DNP	3-0-1-2	0-0-8-0	5-2-1-2	DNP	0-0-0-0	14-2-16-2	0-0-5-0	0-1-0-0	2-0-1-0	10-0-1-0	DNP	8-0-1-1
8/27	#14 Illinois	2-25-9-2	0-3-12-0	DNP	2-0-0-0	0-0-6-0	7-0-1-4	DNP	0-0-0-1	17-0-10-1	0-0-0-0	0-27-10-0	3-0-0-0	17-0-4-2	0-0-0-0	11-1-2-0
9/1	#15 Hawai'i	1-9-5-0	0-0-12-0	4-0-0-2	DNP	0-0-5-0	6-1-1-3	DNP	0-0-0-0	12-1-10-0	0-0-3-0	0-23-6-0	1-0-0-1	1-0-1-0	0-0-1-0	11-0-2-1
9/2	#8 UCLA	1-30-9-1	0-3-25-0	4-2-1-2	1-0-0-0	0-0-8-0	4-0-0-2	0-0-1-0	DNP	18-1-13-2	0-0-1-0	0-4-1-0	0-0-0-0	10-0-1-3	DNP	5-0-1-6
9/3	Pacific	DNP	0-1-17-0	11-0-0-5	DNP	1-0-5-0	5-0-0-3	0-0-0-0	DNP	10-0-11-1	0-0-6-0	0-37-8-1	DNP	5-0-1-0	2-0-3-0	6-0-3-5
9/8	McNeese State															
9/9	#12 Ohio State															
9/10	Western Illinois															
9/10	IUPUI															
9/13	Arkansas State															
9/16	Milwaukee															
9/17	Iowa State															
9/17	Marquette															
9/23	Wichita State*															
9/26	Southern Illinois*															
9/30	UNI*															
10/1	Drake*															
10/7	Bradley*															
10/8	Loyola*															
10/10	Evansville*															
10/14	Illinois State*															
10/15	Indiana State*															
10/21	Wichita State*															
10/28	Drake*															
10/29	UNI*															
11/5	Bradley*															
11/6	Loyola*															
11/11	Indiana State*															
11/12	Illinois State*															
11/18	Evansville*															
11/19	Southern Illinois*															

K-Kills, A-Assists, D-Digs, B-Blocks; DNP-Did Not Play; *-MVC match

2016 Team Match-by-Match Statistics

Date	Opponent	< Missouri State >										Score	< Opponents >									
		K	E	TA	Pct.	A	SA	SE	Dig	Blk.	K		E	TA	Pct.	A	SA	SE	Dig	Blk.		
8/26	Xavier	56	25	167	.186	52	5	9	71	5.0	2-3	68	23	179	.251	61	2	15	80	4.0		
8/27	Arkansas	44	21	116	.198	38	4	13	55	4.0	3-0	24	14	105	.095	24	3	14	42	5.0		
8/27	#14 Illinois	59	29	156	.192	56	5	8	53	5.0	3-2	61	18	141	.305	59	3	9	58	16.0		
9/1	#15 Hawai'i	36	17	111	.171	34	2	6	46	4.0	0-3	46	12	109	.312	44	5	10	51	9.0		
9/2	#8 UCLA	43	25	147	.122	40	3	6	61	9.0	1-3	63	18	149	.302	61	1	8	75	8.0		
9/3	Pacific	40	12	99	.283	38	3	5	54	8.0	3-0	31	19	111	.108	30	6	12	42	8.0		
9/8	McNeese State																					
9/9	#12 Ohio State																					
9/9	Western Illinois																					
9/10	IUPUI																					
9/13	Arkansas State																					
9/16	Milwaukee																					
9/17	Iowa State																					
9/17	Marquette																					
9/23	Wichita State*																					
9/26	Southern Illinois*																					
9/30	UNI*																					
10/1	Drake*																					
10/7	Bradley*																					
10/8	Loyola*																					
10/10	Evansville*																					
10/14	Illinois State*																					
10/15	Indiana State*																					
10/21	Wichita State*																					
10/28	Drake*																					
10/29	UNI*																					
11/5	Bradley*																					
11/6	Loyola*																					
11/11	Indiana State*																					
11/12	Illinois State*																					
11/18	Evansville*																					
11/19	Southern Illinois*																					

K-Kills, E-Errors, TA-Total Attack Attempts, Pct.-Hitting Percentage, A-Assists, SA-Service Aces, SE-Service Errors, Dig-Digs, Blk.-Blocks, *-MVC match

Season and Career Match Highs

2016 (6 matches) #1 Brienne Dixon.... Career (58 matches)
 1, 9/3/16 vs. Pacific.....Kills (3 sets).....1, 9/3/16 vs. Pacific
 NA.....Kills (4 sets).....NA
 NA.....Kills (5 sets).....NA
 12, 8/26/16 vs. Xavier.....Digs.....15, 2x, last 11/15/15 at Loyola
 NA.....Assists.....2, 9/19/15 vs. South Dakota State
 1, 2x, last 9/1/16 at #15 Hawai'i.....Aces.....1, 6x, last 11/21/15 vs. S. Illinois
 NA.....Blocks.....NA

2016 (0 matches) #2 Julia Hanson..... Career (0 matches)
 NA.....Kills (3 sets).....NA
 NA.....Kills (4 sets).....NA
 NA.....Kills (5 sets).....NA
 NA.....Digs.....NA
 NA.....Assists.....NA
 NA.....Aces.....NA
 NA.....Blocks.....NA

2016 (6 matches) #5 Lynsey Wright.... Career (68 matches)
 11, 9/1/16 at #15 Hawai'i.....Kills (3 sets).....15, 11/27/15 vs. Southern Illinois
 5, 9/2/16 vs. #8 UCLA.....Kills (4 sets).....16, 10/24/14 vs. Bradley
 14, 8/26/16 vs. Xavier.....Kills (5 sets).....24, 10/5/15 at Southern Illinois
 5, 8/26/16 vs. Xavier.....Digs.....8, 10/31/15 vs. Wichita State
 1, 8/27/16 at #14 Illinois.....Assists.....1, 5x, last 8/27/16 at #14 Illinois
 1, 3x, last 9/3/16 vs. Pacific.....Aces.....3, 9/18/15 vs. UMKC
 6, 9/2/16 vs. #8 UCLA.....Blocks.....6, 2x, last 9/2/16 vs. #8 UCLA

2016 (5 matches) #6 Lauren Boone Career (57 matches)
 2, 8/27/16 vs. Arkansas.....Kills (3 sets).....7, 10/17/15 vs. Bradley
 1, vs. 9/2/16 vs. #8 UCLA.....Kills (4 sets).....6, 11/6/15 vs. UNI
 3, 8/26/16 vs. Xavier.....Kills (5 sets).....12, 10/23/15 at Indiana State
 9, 3x, last 9/2/16 vs. #8 UCLA.....Digs.....11, 11/21/14 at Illinois State
 40, 8/26/16 vs. Xavier.....Assists.....40, 8/26/16 vs. Xavier
 NA.....Aces.....NA
 2, 8/27/16 at #14 Illinois.....Blocks.....5, 10/17/15 vs. Bradley

2016 (3 matches) #7 Laynie Dake Career (3 matches)
 3, 8/27/16 vs. Arkansas.....Kills (3 sets).....3, 8/27/16 vs. Arkansas
 1, 9/2/16 vs. #8 UCLA.....Kills (4 sets).....1, 9/2/16 vs. #8 UCLA
 2, 8/27/16 at #14 Illinois.....Kills (5 sets).....2, 8/27/16 at #14 Illinois
 1, 8/27/16 vs. Arkansas.....Digs.....1, 8/27/16 vs. Arkansas
 NA.....Assists.....NA
 NA.....Aces.....NA
 2, 8/27/16 vs. Arkansas.....Blocks.....2, 8/27/16 vs. Arkansas

2016 (6 matches) #8 Emily Butters Career (41 matches)
 NA.....Kills (3 sets).....NA
 NA.....Kills (4 sets).....NA
 NA.....Kills (5 sets).....NA
 25, 9/2/16 vs. #8 UCLA.....Digs.....29, 2x, last 11/28/15 vs. Wichita State
 3, 2x, last vs. #8 UCLA.....Assists.....6, 2x, last 11/15/15 at Loyola
 2, 8/26/16 vs. Xavier.....Aces.....3, 9/19/15 vs. South Dakota State
 NA.....Blocks.....NA

2016 (6 matches) #9 Simone House Career (87 matches)
 6, 9/1/16 at #15 Hawai'i.....Kills (3 sets).....11, 4x, last 11/2/15 at Evansville
 4, 9/2/16 vs. #8 UCLA.....Kills (4 sets).....10, 2x, last 10/16/15 vs. Loyola
 7, 8/27/16 at #14 Illinois.....Kills (5 sets).....18, 9/26/15 vs. Indiana State
 1, 2x, last 9/1/16 at #15 Hawai'i.....Digs.....5, 2x, last 10/3/14 vs. Drake
 2, 8/27/16 vs. Arkansas.....Assists.....2, 2x, last 2, 8/27/16 vs. Arkansas
 NA.....Aces.....5, 11/1/13 at Southern Illinois
 4, 2x, last 8/27/16 at #14 Illinois.....Blocks.....8, 9/8/14 at Kansas State

2016 (3 matches) #10 Aubrey Cheffey... Career (3 matches)
 11, 9/3/16 vs. Pacific.....Kills (3 sets).....11, 9/3/16 vs. Pacific
 4, 9/2/16 vs. #8 UCLA.....Kills (4 sets).....4, 9/2/16 vs. #8 UCLA
 NA.....Kills (5 sets).....NA
 1, 4, 9/2/16 vs. #8 UCLA.....Digs.....1, 4, 9/2/16 vs. #8 UCLA
 2, 9/2/16 vs. #8 UCLA.....Assists.....2, 9/2/16 vs. #8 UCLA
 NA.....Aces.....NA
 5, 9/3/16 vs. Pacific.....Blocks.....5, 9/3/16 vs. Pacific

2016 (6 matches) #11 Ashley Ophoven..Career (40 matches)
 10, 8/27/16 vs. Arkansas.....Kills (3 sets).....10, 8/27/16 vs. Arkansas
 10, 9/2/16 vs. #8 UCLA.....Kills (4 sets).....16, 9/5/15 vs. Marquette
 17, 8/27/16 at #14 Illinois.....Kills (5 sets).....20, 11/28/15 vs. Wichita State
 4, 8/27/16 at #14 Illinois.....Digs.....5, 2x, last 10/31/15 vs. Wichita State
 NA.....Assists.....2, 10/23/15 at Indiana State
 NA.....Aces.....NA
 3, 9/2/16 vs. #8 UCLA.....Blocks.....3, 3x, last 9/2/16 vs. #8 UCLA

2016 (0 matches) #12 Caroline Finnell . Career (12 matches)
 NA.....Kills (3 sets).....3, 9/19/15 vs. South Dakota State
 NA.....Kills (4 sets).....1, 2x, last 12/3/15 vs. #25 Missouri
 NA.....Kills (5 sets).....1, 2x, last 10/10/15 at UNI
 NA.....Digs.....2, 10/10/15 at UNI
 NA.....Assists.....NA
 NA.....Aces.....NA
 NA.....Blocks.....1, 11/20/15 vs. Evansville

2016 (2 matches) #13 Gerri Idos Career (2 matches)
 NA.....Kills (3 sets).....NA
 NA.....Kills (4 sets).....NA
 NA.....Kills (5 sets).....NA
 1, 9/2/16 vs. #8 UCLA.....Digs.....1, 9/2/16 vs. #8 UCLA
 NA.....Assists.....NA
 NA.....Aces.....NA
 NA.....Blocks.....NA

2016 (4 matches) #14 MacKenzie Irwin. Career (17 matches)
 5, 8/26/16 vs. Xavier.....Kills (3 sets).....4, 10/9/15 at Drake
 NA.....Kills (4 sets).....NA
 NA.....Kills (5 sets).....1, 3x, last 10/5/15 at Southern Illinois
 2, 8/26/16 vs. Xavier.....Digs.....2, 8/26/16 vs. Xavier
 1, 8/26/16 vs. Xavier.....Assists.....1, 8/26/16 vs. Xavier
 NA.....Aces.....4, 10/9/15 at Drake
 2, 8/26/16 vs. Xavier.....Blocks.....2, 3x, last 8/26/16 vs. Xavier

2016 (6 matches) #15 Tatum Marshall...Career (102 matches)
 NA.....Kills (3 sets).....1, 2x, last 8/30/14 vs. Montana State
 NA.....Kills (4 sets).....1, 9/6/13 vs. St. John's
 NA.....Kills (5 sets).....1, 2x, last 11/14/14 vs. S. Illinois
 10, 8/26/16 vs. Xavier.....Digs.....20, 11/21/14 at Illinois State
 NA.....Assists.....4, 5x, last 9/5/15 vs. Marquette
 3, 8/26/16 vs. Xavier.....Aces.....5, 9/26/14 at Loyola
 NA.....Blocks.....NA

2016 (6 matches) #17 Lily Johnson Career (73 matches)
 14, 8/27/16 vs. Arkansas.....Kills (3 sets).....23, 11/13/15 at Bradley
 18, 9/2/16 vs. #8 UCLA.....Kills (4 sets).....24, 12/3/15 vs. #25 Missouri
 20, 8/26/16 vs. Xavier.....Kills (5 sets).....27, 8/29/15 vs. Western Michigan
 16, 8/27/16 vs. Arkansas.....Digs.....23, 11/21/14 at Illinois State
 4, 8/26/16 vs. Xavier.....Assists.....4, 2x, last 8/26/16 vs. Xavier
 3, 8/27/16 at #14 Illinois.....Aces.....5, 11/15/14 vs. Evansville
 2, 2x, last 9/2/16 vs. #8 UCLA.....Blocks.....4, 5x, last 11/15/15 at Loyola

2016 (4 matches) #19 Mikaela Mosquera. Career (13 matches)
 2, 8/27/16 vs. Arkansas.....Kills (3 sets).....3, 9/19/15 vs. South Dakota State
 NA.....Kills (4 sets).....NA
 3, 8/27/16 at #14 Illinois.....Kills (5 sets).....3, 8/27/16 at #14 Illinois
 1, 8/27/16 vs. Arkansas.....Digs.....1, 2x, last 8/27/16 vs. Arkansas
 NA.....Assists.....NA
 NA.....Aces.....NA
 1, 9/1/16 at #15 Hawai'i.....Blocks.....1, 2x, last 9/1/16 at #15 Hawai'i

2016 (0 matches) #21 Paige Perry Career (0 matches)
 NA.....Kills (3 sets).....NA
 NA.....Kills (4 sets).....NA
 NA.....Kills (5 sets).....NA
 NA.....Digs.....NA
 NA.....Assists.....NA
 NA.....Aces.....NA
 NA.....Blocks.....NA

2016 (6 matches) #22 Daniele Messa Career (6 matches)
 NA.....Kills (3 sets).....NA
 NA.....Kills (4 sets).....NA
 NA.....Kills (5 sets).....NA
 10, 8/27/16 at #14 Illinois.....Digs.....10, 8/27/16 at #14 Illinois
 37, 9/3/16 vs. Pacific.....Assists.....37, 9/3/16 vs. Pacific
 2, 8/27/16 at #14 Illinois.....Aces.....2, 8/27/16 at #14 Illinois
 1, 9/3/16 vs. Pacific.....Blocks.....1, 9/3/16 vs. Pacific

2016 (4 matches) #23 Cambree Villarreal.. Career (21 matches)
 6, 8/26/16 vs. Xavier.....Kills (3 sets).....7, 2x, last 9/25/15 vs. Illinois State
 NA.....Kills (4 sets).....8, 10/2/15 at Wichita State
 NA.....Kills (5 sets).....4, 9/26/15 vs. Indiana State
 3, 9/3/16 vs. Pacific.....Digs.....3, 2x, last 9/3/16 vs. Pacific
 NA.....Assists.....1, 2x, last 10/16/15 vs. Loyola
 NA.....Aces.....NA
 1, 8/26/16 vs. Xavier.....Blocks.....2, 3x, last 10/10/15 at UNI

Player Summaries

#1 Brianne Dixon, 5-7, Jr., DS, Springfield, Mo.

- ▶ MVC Elite 18 Award winner in 2015, given to the player with the highest GPA in the MVC tournament title match
- ▶ Five career matches with at least 10 digs

#2 Julia Hanson, 6-0, Fr., OH/DS, Fort Atkinson, Wis.

- ▶ Averaged 4.47 kills, 4.41 digs and 1.44 blocks per set as a senior in high school

#5 Lynsey Wright, 6-0, Jr., MB, Glen Carbon, Ill.

- ▶ Played for the US Collegiate National Team in summer 2016
- ▶ Hit .300 or better in 32 career matches, over .400 17 times
- ▶ MVC All-Freshman selection in 2014
- ▶ MVC all-tournament pick in 2015

#6 Lauren Boone, 6-1, Jr., S, Branson, Mo.

- ▶ Made more than 20 starts on the right side in her career
- ▶ Neared a triple-double with 8 kills, 18 assists and 11 digs against Illinois State as a freshman
- ▶ Hit .230 or better in each of her first two seasons

#7 Laynie Dake, 6-2, Fr., MB, Mount Vernon, Mo.

- ▶ Owns HS records for kills (1,190), blocks (213), hitting percentage (.389) and kill percentage (.517)
- ▶ All-state as a high school junior and senior

#8 Emily Butters, 5-8, So., L, Richmond, Texas

- ▶ Set MSU's freshman record for digs in 2015 with 568, which ranked 5th overall in MSU history
- ▶ Played for the US Collegiate National Team in summer 2016
- ▶ Missouri State's libero for every match of her career
- ▶ MVC all-Freshman selection in 2016

#9 Simone House, 6-3, Sr., MB, Oshkosh, Wis.

- ▶ Ranks 7th in MSU history with .297 attack efficiency
- ▶ Hit .300 or higher in 42 career matches
- ▶ Second-team all-MVC in 2015, all-Freshman in 2013
- ▶ Led MSU in blocking 54 times in 87 career matches
- ▶ Averaged at least 0.78 blocks in each of her four seasons

#10 Aubrey Cheffey, 6-2, Fr., OH, Nixa, Mo.

- ▶ AVCA Under Armour All-America honorable mention as a high school senior
- ▶ First-team all-state selection as a junior and senior
- ▶ MVC Freshman of the Week on Sept. 6, 2016

#11 Ashley Ophoven, So., OH, Ozark, Mo.

- ▶ 278 kills in 2015 ranked 10th all-time among MSU freshmen
- ▶ Reached 100 kills in 9th career match, 2nd-quickest in school history
- ▶ One of 10 freshmen at MSU with 20 or more kills in a match

#12 Caroline Finnell, 6-2, So., RS, Chesterfield, Mo.

- ▶ Redshirted in 2014
- ▶ Averaged 1.22 blocks per set as a high school senior

#13 Gerri Idos, 5-1, Fr., DS, Springfield, Mo.

- ▶ Accumulated more than 900 career digs in high school
- ▶ Averaged 5.9 digs per set as a senior

#14 MacKenzie Irwin, 6-1, So., MB, Joplin, Mo.

- ▶ Started three matches as a freshman
- ▶ Set high school records with 759 career kills and 166 blocks

#15 Tatum Marshall, 5-7, Sr., DS/L, Fayetteville, Ark.

- ▶ Appeared in 102 of a possible 105 matches in her career
- ▶ Eclipsed 250 digs as a sophomore and junior
- ▶ Second on the team in aces each of the last two seasons

#17 Lily Johnson, 5-11, Jr., OH, Wildwood, Mo.

- ▶ Missouri State's only multiple-time All-American as an AVCA honorable selection each of her first two seasons
- ▶ MVC Player of the Year in 2015
- ▶ Six-time MVC Player of the Week
- ▶ Three-time MVC Scholar-Athlete of the Week
- ▶ First sophomore in MSU history to reach 1,000 career kills
- ▶ 620 kills in 2015 ranked 3rd nationally as the second-best total in MSU history
- ▶ Owns school record with 36 career matches of 10+ kills from October 2014-October 2015
- ▶ Second at Missouri State with 25 career matches of 20+ kills
- ▶ Ranks 12th in MSU history with 1,206 career kills
- ▶ First MVC player to lead league in kills as a freshman and sophomore, fifth overall
- ▶ Played for the US Collegiate National Team in summer 2016

#19 Mikaela Mosquera, So., MB, West Chicago, Ill.

- ▶ Helped high school team to 86 wins in four seasons
- ▶ Won the 2014 national championship in club volleyball playing for Sports Performance 18 Red

#21 Paige Perry, Fr., OH/DS, Ozark, Mo.

- ▶ Helped Ozark High to four 30-win seasons and four state semi-final appearances
- ▶ Four-time Academic All-America selection in high school
- ▶ Named to PrepVolleyball.com's Defensive Dandies fourth team following her senior season

#22 Daniele Messa, Fr., S, Bartlett, Ill.

- ▶ Guided St. Francis High to four consecutive state titles and a 109-10 cumulative record
- ▶ Finalist for the Andi Collins Award as a senior, given annually to the nation's top setter
- ▶ First-team all-state choice as a senior

#23 Cambree Villarreal, So., OH, Amarillo, Texas

- ▶ High school All-American according to both PrepVolleyball and the AVCA
- ▶ Made three starts as a freshman

Updated Career Statistics for Players Active Before 2016

Simone House, 6-3, Sr., MB, Oshkosh, Wis.

Year	M-MS	SP	K	E	Att.	Pct.	Ast.	SA	SE	Dig	BS	BA	KPS	DPS	BPS
2013	17-12	52	86	21	191	.340	2	12	12	27	6	43	1.65	0.52	0.94
2014	29-28	113	155	49	381	.278	2	1	3	27	7	97	1.37	0.24	0.92
2015	35-35	133	242	82	580	.310	5	0	0	23	21	111	1.82	0.17	0.99
2016	9-9	23	31	14	85	.200	3	0	0	2	2	16	1.35	0.09	0.78
Total	87-81	321	514	146	1237	.297	12	13	15	79	36	267	1.60	0.25	0.94

Tatum Marshall, 5-7, Sr., DS/L, Fayetteville, Ark.

Year	M-MS	SP	K	E	Att.	Pct.	Ast.	SA	SE	Dig	BS	BA	KPS	DPS	BPS
2013	29-6	90	2	1	7	.143	34	15	14	152	0	0	0.02	1.69	0.00
2014	32-20	122	3	1	13	.154	52	29	35	282	0	0	0.02	2.31	0.00
2015	35-13	131	0	1	3	-.333	31	32	32	263	0	0	0.00	2.01	0.00
2016	6-3	20	0	0	0	.000	0	3	9	25	0	0	0.00	1.25	0.00
Total	102-42	363	5	3	23	.087	117	79	90	722	0	0	0.01	1.99	0.00

Lauren Boone, 6-1, Jr., S, Branson, Mo.

Year	M-MS	SP	K	E	Att.	Pct.	Ast.	SA	SE	Dig	BS	BA	KPS	DPS	BPS
2014	23-10	55	58	15	170	.253	36	0	0	26	0	18	1.05	0.47	0.33
2015	29-13	91	99	28	309	.230	17	0	1	34	3	41	1.09	0.37	0.48
2016	5-5	20	9	5	37	.108	136	0	2	38	0	4	0.45	1.90	0.20
Total	57-28	166	166	48	516	.229	189	0	3	98	3	63	1.00	0.59	0.40

Brianne Dixon, 5-7, Jr., DS, Springfield, Mo.

Year	M-MS	SP	K	E	Att.	Pct.	Ast.	SA	SE	Dig	BS	BA	KPS	DPS	BPS
2014	18-0	25	0	0	0	.000	0	0	5	17	0	0	0.00	0.68	0.00
2015	34-6	117	0	0	0	.000	11	6	11	135	0	0	0.00	1.15	0.00
2016	6-5	23	1	0	1	1.000	0	2	5	44	0	0	0.04	1.91	0.00
Total	58-11	165	1	0	1	1.00	11	8	21	196	0	0	0.01	1.19	0.00

Lily Johnson, 5-11, Jr., OH, Wildwood, Mo.

Year	M-MS	SP	K	E	Att.	Pct.	Ast.	SA	SE	Dig	BS	BA	KPS	DPS	BPS
2014	32-32	124	495	210	1442	.198	23	39	62	312	3	42	3.99	2.52	0.36
2015	35-35	135	620	212	1726	.236	28	40	54	398	5	43	4.59	2.95	0.36
2016	6-6	23	91	39	296	.176	8	6	5	73	1	6	3.96	3.17	0.30
Total	73-73	282	1206	461	3464	.215	59	85	121	783	9	91	4.28	2.78	0.35

Lynsey Wright, 6-0, Jr., MB, Glen Carbon, Ill.

Year	M-MS	SP	K	E	Att.	Pct.	Ast.	SA	SE	Dig	BS	BA	KPS	DPS	BPS
2014	29-27	111	246	94	522	.291	3	10	43	57	5	64	2.22	0.51	0.62
2015	33-29	127	350	135	769	.280	5	14	34	50	7	83	2.76	0.39	0.71
2016	6-6	23	55	25	135	.222	1	3	8	14	1	12	2.39	0.61	0.57
Total	68-62	261	651	254	1426	.278	9	27	85	121	13	159	2.49	0.46	0.66

Emily Butters, 5-8, So., L, Richmond, Texas

Year	M-MS	SP	K	E	Att.	Pct.	Ast.	SA	SE	Dig	BS	BA	KPS	DPS	BPS
2015	35-0	135	0	1	3	-.333	92	15	23	568	0	0	0.00	4.21	0.00
2016	6-0	23	0	0	2	.000	9	5	11	98	0	0	0.00	4.26	0.00
Total	61-0	158	0	1	5	-.200	101	20	34	666	0	0	0.00	4.22	0.00

Caroline Finnell, 6-2, So., RS, Chesterfield, Mo.

Year	M-MS	SP	K	E	Att.	Pct.	Ast.	SA	SE	Dig	BS	BA	KPS	DPS	BPS
2015	14-1	19	14	2	26	.462	0	0	0	5	0	1	0.74	0.26	0.05
Total	14-1	19	14	2	26	.462	0	0	0	5	0	1	0.74	0.26	0.05

MacKenzie Irwin, 6-1, So., MB, Joplin, Mo.

Year	M-MS	SP	K	E	Att.	Pct.	Ast.	SA	SE	Dig	BS	BA	KPS	DPS	BPS
2015	13-3	27	15	8	42	.167	0	4	4	2	0	8	0.56	0.07	0.30
2016	4-0	9	5	2	10	.300	1	0	0	2	0	3	0.56	0.22	0.33
Total	17-3	36	20	8	52	.192	1	4	4	4	0	11	0.56	0.11	0.31

Mikaela Mosquera, So., MB, West Chicago, Ill.

Year	M-MS	SP	K	E	Att.	Pct.	Ast.	SA	SE	Dig	BS	BA	KPS	DPS	BPS
2015	9-0	10	7	4	19	.158	0	0	0	1	0	1	0.70	0.10	0.10
2016	4-0	6	6	3	15	.200	0	0	0	1	0	1	1.00	0.17	0.17
Total	13-0	16	13	7	34	.176	0	0	0	2	0	2	0.81	0.12	0.12

Ashley Ophoven, So., OH, Ozark, Mo.

Year	M-MS	SP	K	E	Att.	Pct.	Ast.	SA	SE	Dig	BS	BA	KPS	DPS	BPS
2015	34-17	121	278	150	751	.170	6	0	1	58	4	26	2.30	0.48	0.25
2016	6-1	18	47	30	120	.142	0	0	0	8	1	5	2.61	0.44	0.33
Total	40-18	139	325	180	871	.166	6	0	1	66	5	31	2.34	0.47	0.26

Cambree Villarreal, So., OH, Amarillo, Texas

Year	M-MS	SP	K	E	Att.	Pct.	Ast.	SA	SE	Dig	BS	BA	KPS	DPS	BPS
2015	17-3	38	41	24	153	.111	2	0	0	10	0	8	1.08	0.26	0.21
2016	4-0	9	8	6	41	.049	0	0	0	6	0	1	0.89	0.67	0.11
Total	21-3	47	49	30	194	.098	2	0	0	16	0	9	1.04	0.34	0.19

2016 Overall Season Statistics (3-3, 0-0 MVC)

2016 Missouri State Volleyball Missouri State Combined Team Statistics (as of Sep 03, 2016) All matches

Overall record: 3-3 Conf: 0-0 Home: 0-0 Away: 1-1 Neutral: 2-2

##	Player	sp	Attack				pct	Set		Serve			re	Dig		Blocking					points	
			k	k/s	e	ta		a	a/s	sa	se	sa/s		dig	dig/s	bs	ba	total	blk/s	be		bhe
17	Johnson,Lily	23	91	3.96	39	296	.176	8	0.35	6	5	0.26	5	73	3.17	1	6	7	0.30	0	0	101.0
5	Wright,Lynsey	23	55	2.39	25	135	.222	1	0.04	3	8	0.13	0	14	0.61	1	12	13	0.57	2	0	65.0
11	Ophoven,Ashley	18	47	2.61	30	120	.142	0	0.00	0	0	0.00	0	8	0.44	1	5	6	0.33	2	0	50.5
9	House,Simone	23	31	1.35	14	85	.200	3	0.13	0	0	0.00	1	2	0.09	2	16	18	0.78	0	0	41.0
10	Cheffey,Aubrey	9	19	2.11	3	39	.410	2	0.22	0	0	0.00	0	1	0.11	0	9	9	1.00	0	0	23.5
6	Boone,Lauren	20	9	0.45	5	37	.108	136	6.80	0	2	0.00	0	38	1.90	0	4	4	0.20	0	4	11.0
23	Villarreal,Cambree	9	8	0.89	6	41	.049	0	0.00	0	0	0.00	0	6	0.67	0	1	1	0.11	0	0	8.5
7	Dake,Laynie	6	6	1.00	2	13	.308	0	0.00	0	0	0.00	0	1	0.17	0	2	2	0.33	1	0	7.0
19	Mosquera,Mikaela	6	6	1.00	3	15	.200	0	0.00	0	0	0.00	0	1	0.17	0	1	1	0.17	0	0	6.5
14	Irwin,MacKenzie	9	5	0.56	2	10	.300	1	0.11	0	0	0.00	0	2	0.22	0	3	3	0.33	0	0	6.5
1	Dixon,Brianne	23	1	0.04	0	1	1.000	0	0.00	2	5	0.09	6	44	1.91	0	0	0	0.00	0	0	3.0
22	Messa,Daniele	18	0	0.00	0	2	.000	98	5.44	3	7	0.17	0	26	1.44	0	1	1	0.06	0	1	3.5
8	Butters,Emily	23	0	0.00	0	2	.000	9	0.39	5	11	0.22	6	98	4.26	0	0	0	0.00	0	0	5.0
13	Idos,Gerri	4	0	0.00	0	0	.000	0	0.00	0	0	0.00	0	1	0.25	0	0	0	0.00	0	0	0.0
15	Marshall,Tatum	20	0	0.00	0	0	.000	0	0.00	3	9	0.15	1	25	1.25	0	0	0	0.00	0	0	3.0
MISSOURI STATE		23	278	12.09	129	796	.187	258	11.22	22	47	0.96	20	340	14.78	5	60	35.0	1.52	5	5	335.0
Opponents		23	293	12.74	104	794	.238	279	12.13	20	68	0.87	22	348	15.13	10	80	50.0	2.17	10	6	363.0

Team Statistics	MSU	OPP
ATTACK		
Kills	278	293
Errors	129	104
Total Attacks	796	794
Attack Pct	.187	.238
Kills/Set	12.1	12.7
SET		
Assists	258	279
Assists/Set	11.2	12.1
SERVE		
Aces	22	20
Errors	47	68
Aces/Set	1.0	0.9
SERVE RECEPTIONS		
Errors	20	22
Errors/Set	0.9	1.0
DEFENSE		
Digs	340	348
Digs/Set	14.8	15.1
BLOCKING		
Block Solo	5	10
Block Assist	60	80
Total Blocks	35.0	50.0
Blocks/Set	1.5	2.2
Block Errors	5	10
Ball handling errors	5	6
ATTENDANCE		
Total	0	8148
Dates/Avg Per Date	0/0	2/4074
Neutral site #/Avg	4/0	
Current win streak	1	-
Home win streak	0	-

Date	Opponent	Score	Score by set	Att.
08-26-16	vs Xavier	L 2-3	25-18,25-23,23-25,17-25,14-16	0
08-27-16	vs Arkansas	w 3-0	25-16,25-19,29-27	0
08-27-16	at #14 Illinois	w 3-2	25-22,14-25,25-22,15-25,15-10	2544
09-01-16	at #15 Hawaii	L 0-3	16-25,22-25,22-25	5604
09-02-16	vs #8 UCLA	L 1-3	25-21,16-25,18-25,15-25	0
09-03-16	vs Pacific	w 3-0	25-14,25-23,25-19	0

Record in 3-set matches:2-1 • Record in 4-set matches:0-1 • Record in 5-set matches:1-1

TV/Radio Roster



#1 Brianne Dixon
Jr. • DS • Springfield, Mo.
Kickapoo High



#2 Julia Hanson
Fr. • OH/DS • Fort Atkinson, Wis.
Fort Atkinson High



#5 Lynsey Wright
Jr. • MB • Glen Carbon, Ill.
Edwardsville High



#6 Lauren Boone
Jr. • S • Branson, Mo.
Branson High



#7 Laynie Dake
Fr. • MB • Mount Vernon, Mo.
Mount Vernon High



#8 Emily Butters
So. • L • Richmond, Texas
Travis High



#9 Simone House
Sr. • MB • Oshkosh, Wis.
North High



#10 Aubrey Cheffey
Fr. • OH • Nixa, Mo.
Nixa High



#11 Ashley Ophoven
So. • OH • Ozark, Mo.
Ozark High



#12 Caroline Finnell
So. • RS • Chesterfield, Mo.
Marquette High



#13 Gerri Idos
Fr. • DS • Springfield, Mo.
Kickapoo High



#14 MacKenzie Irwin
So. • MB • Joplin, Mo.
Carl Junction High



#15 Tatum Marshall
Sr. • DS/L • Fayetteville, Ark.
Fayetteville High



#17 Lily Johnson
Jr. • OH • Wildwood, Mo.
Lafayette High



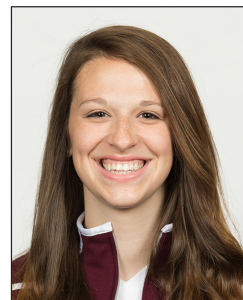
#19 Mikaela Mosquera
So. • MB • West Chicago, Ill.
St. Charles East High



#21 Paige Perry
Fr. • OH/DS • Ozark, Mo.
Ozark High



#22 Daniele Messa
Fr. • S • Bartlett, Ill.
St. Francis High



#23 Cambree Villarreal
So. • OH • Amarillo, Texas
Amarillo High



Melissa Stokes
Head Coach, 21st season



Jake Barreau
Assistant Coach, 3rd season



Kevin Dunn
Assistant Coach, 2nd season



Karen Rivatto
Graduate Assistant, 2nd season